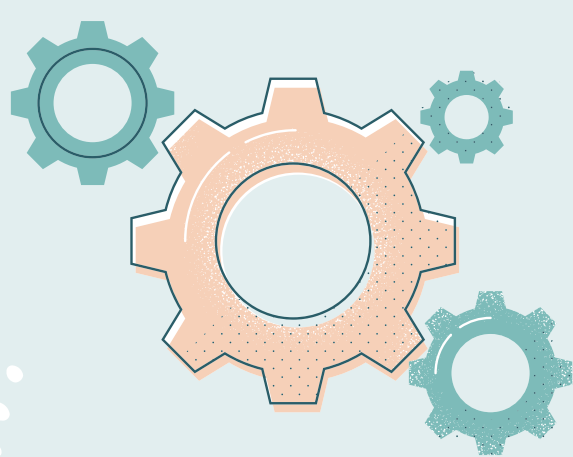


# Load Balancer as a Service Explained in Detail



Load balancing is the appropriate distribution of incoming traffic across a bunch of servers. This way it ensures that no one particular server is overloaded and thus performs with maximum efficiency.

Load balancing as a service would mean that the provider would use a predetermined pattern for the distribution of traffic load.



An application or a web browser would receive a request from the user's end and fulfill that would try to connect it with a server. Now the load balancer, working on a set pattern would divert this request to an appropriate server.

Load balancing as a service is usually cheaper than traditional handling of your incoming traffic. In addition to being cheaper, it is simpler to implement as well.

